



NMAS 02.10

Guide for the Operation, Management, and Coordination of Mine Action Projects in Lebanon

March 2020

Edition 2.1

Lebanon Mine Action Center-LMAC

Chekri Ghanem Casern–Fayadieh

Tel: +961 5 956143, Fax: +961 5 956192

Email: info@lebmac.org

Website: <http://www.lebmac.org/>

Warning

This document has been released on the date shown on the cover page. The National Mine Action Standards (NMAS) of Lebanon are subject to regular review and update, so users are advised to consult the most recent version. To ensure that you have access to the current version, contact the Lebanon Mine Action Center (LMAC) through the www.lebmac.org website or by sending an email to info@lebmac.org.

Copyright Notice

This is a national document generated and owned by Lebanon. It must not be copied or altered without the written consent of the LMAC.

Tel: +961 5 956143,

Fax: +961 5 956192

Email: info@lebmac.org

The LMAC gratefully acknowledges UNDP support during the preparation of this NMAS.

© LMAC 2020 – All Rights Reserved.

Table of Contents

Foreword.....	iv
Acronyms	v
Introduction	vi
1. Scope.....	1
2. References	1
3. Key Terms and Definitions	1
4. Structure of Mine Action Operations in Lebanon.....	2
5. Role of the LMAA	3
6. Role of the LMAC	3
7. Role of Implementing Agencies	4
8. Funding Mine Action in Lebanon	4
ANNEX A: Normative and Informative References.....	5
ANNEX B: Hierarchy of the LMAP	6
ANNEX C: General organization of the LMAC	7
NMAS 02.10, Edition 2.1: Amendment Record.....	8

Foreword

The National Mine Action Standards (NMAS) of Lebanon were first developed in the form of Technical Standards and Guidelines (TSG). These TSG were edited into the first edition of the NMAS in 2010 and were written to comply with the first edition of the International Mine Action Standards (IMAS). Since then, the scope of the IMAS has been expanded to include more components of mine action and amended to mirror the most recent changes to standards as required in today's operations. These changes, as well as changes in the local context of Lebanon, have necessitated a review and update of the NMAS.

As detailed in the National Mine Action Policy of 2007, the Lebanon Mine Action Center (LMAC) has the responsibility to execute and coordinate the Lebanon Mine Action Program (LMAP) on behalf of the Lebanon Mine Action Authority (LMAA), including the development and amendment of standards. Such standards shall be developed in a participatory approach that shall involve international, governmental, and nongovernmental organizations.

The NMAS are reviewed as needed to reflect amendments in the IMAS as well as incorporate changes to international obligations and local requirements. Such revisions are made available on the LMAC's website www.lebmac.org or can be obtained through contacting the LMAC via the email info@lebmac.org.

Acronyms

GoL	Government of Lebanon
IAs	Implementing Agencies
IM	Information Management
IMAS	International Mine Action Standards
IMSMA	Information Management System for Mine Action
ISG	International Support Group
LAF	Lebanese Armed Forces
LNMAS	Lebanon National Mine Action Strategy
LMAA	Lebanon Mine Action Authority
LMAC	Lebanon Mine Action Center
LMAP	Lebanon Mine Action Program
MAF	Mine Action Forum
MoEHE	Ministry of Education and Higher Education
MoFA	Ministry of Foreign Affairs
MoPH	Ministry of Public Health
MoSA	Ministry of Social Affairs
MRE	Mine Risk Education
MVA	Mine Victim Assistance
NGO	Non-Governmental Organization
NMAS	National Mine Action Standards
OPS	Operations (office)
QA	Quality Assurance
QC	Quality Control
RMAC	Regional Mine Action Centre
RSHDL	Regional School for Humanitarian Mine Action in Lebanon
UN	United Nations
UNDP	United Nations Development Program

Introduction

In Lebanon, Mine Action is regulated by the Mine Action Policy endorsed by a Ministerial Decree in 2007. This Policy regulates structures, roles, and responsibilities for clearance, survey, mine risk education, and mine victim assistance. It also outlines coordination and monitoring mechanisms to ensure the effectiveness and efficiency of mine action.

To promote a participatory approach in mine action, the Mine Action Policy sets the structure for formulating a National Mine Risk Education (MRE) Steering Committee and a National Mine Victims Assistance (MVA) Steering Committee. It also outlines membership to the International Support Group (ISG) to support funding mobilization.

The Mine Action Policy reaffirms the adoption of National Mine Action Standards (NMAS) that shall be monitored and revised by the Lebanon Mine Action Center (LMAC) and that shall comply with the International Mine Action Standards (IMAS).

Adhering to the Mine Action Policy, this standard outlines the hierarchy of managing mine action in Lebanon as well as core factors to be taken into account when operating, managing, and coordinating mine action projects in Lebanon.

Guide for the Operation, Management, and Coordination of Mine Action Projects in Lebanon

1. Scope

This NMAS provides guidelines for the management of mine action in Lebanon. It summarizes roles and responsibilities for operating, managing, and coordinating mine action projects in Lebanon.

2. References

A list of normative and informative references is provided in Annex A.

Normative references provide cross-referencing to other standards referred to in this standard and which form an integral part of the provisions of this standard.

Informative references provide a list of documents that may be consulted for a clearer understanding of this standard.

3. Key Terms and Definitions

The following key terms and definitions are used in this guide:

Demining organization: an organization, national or international, accredited by the LMAC to conduct humanitarian demining activities in Lebanon. Demining organizations may also be referred to as Employers or Implementing Agencies (IAs).

Implementing Agencies (IAs): refer to commercial organizations, agencies, associations, national NGOs, international NGOs, UN bodies, and government bodies, such as the military, municipalities, and ministries working in humanitarian mine action in Lebanon.

International Support Group (ISG): a group formed of senior representatives from the United Nations Development Program (UNDP), other UN agencies, and concerned donor country representatives at the Ambassadorial level supporting the work of the LMAA. National and international demining organizations and NGOs with a concern in mine action should be invited to act as members or observers. This group now forms part of the Mine Action Forum (MAF).

- **Lebanon Mine Action Authority (LMAA):** the legal authority assigned the responsibility for managing and overseeing the Lebanon Mine Action Program (LMAP) on behalf of the Government of Lebanon (GoL). In accordance with the Mine Action Policy, this authority is chaired by the Minister of Defense.
- **Lebanon Mine Action Center (LMAC):** a national body formed to execute and coordinate the Lebanon Mine Action Program (LMAP) and Lebanon National Mine Action Strategy (LNMAS) on behalf of the Lebanon Mine Action Authority (LMAA).

- *Mine Action*: activities which aim to reduce the social, economic and environmental impact of EO. Mine Action in Lebanon adopts a humanitarian approach and encompasses four of the five pillars of Mine Action defined in the Ottawa Convention; Mine Risk Education (MRE), Mine Victim Assistance (MVA), Survey and Clearance, and Advocacy. In support of these four core pillars, Information Management is considered a key enabling modality.
- *Mine Risk Education (MRE) Steering Committee*: a committee managed and coordinated by the LMAC, chaired by the LMAC Mine Risk Education Section Head, and comprised of the representative of the Ministry of Education and Higher Education (MoEHE), the representative of the Ministry of Social Affairs (MoSA), as well as national, international, and non-governmental organizations working in Lebanon and having an interest in mine risk education.
- *Mine Victim Assistance (MVA) Steering Committee*: a committee managed and coordinated by the LMAC, chaired by the LMAC Mine Victim Assistance Section Head, and formed of the representative of the Ministry of Social Affairs (MoSA), the representative of the Ministry of Public Health (MoPH), as well as national, international, and non-governmental organizations working in Lebanon that are accredited by the LMAC and implementing MVA activities.

In addition to the above terms, NMAS 04.10 provides a glossary of terms and definitions used across all standards.

The terms 'Mine Action' and 'Humanitarian Mine Action' are treated as being synonymous.

As in the IMAS, the terms 'shall', 'should' and 'may' are used across all standards to indicate the required degree of compliance. For any organization working in Lebanon, the use of 'shall' indicates a compulsory requirement. The term 'should' indicates the national preference which may be varied with LMAC approval. The term 'may' indicates a suggestion that is not obligatory.

4. Structure of Mine Action Operations in Lebanon

The highest authority in mine action in Lebanon is the Lebanon Mine Action Authority (LMAA), which is chaired by the Minister of Defense. The Lebanon Mine Action Center (LMAC) is the designated body responsible to execute and coordinate the LMAP on behalf of the LMAA. Under the LMAC's management and coordination, Humanitarian Mine Action activities are implemented by national and international Agencies and by the engineering regiment of the LAF. This structure is graphically illustrated in Annex B.

5. Role of the LMAA

Article 4 of the Mine Action Policy summarizes the main LMAA roles, which include:

- a. promoting and coordinating any cooperation process with national authorities and between parties to facilitate the implementation of mine action activities in Lebanon;
- b. endorsing reports submitted by the LMAC and disseminating official information related to mine action through the Ministry of Foreign Affairs (MoFA);
- c. chairing the ISG (and MAF) meetings, noting that the LMAC Director may preside over the meetings to present the execution phases of the LMAP; and
- d. extending invitations to national and international guests or organizations as deemed appropriate.

6. Role of the LMAC

As outlined in the Mine Action Policy article 7, the LMAC shall execute and coordinate the LMAP on behalf of the LMAA. In doing so, the LMAC manages all humanitarian mine action activities in Lebanon while ensuring that appropriate administrative and logistics support is provided to facilitate the work of all Implementing Agencies in compliance with the Mine Action Strategy and the NMAS.

The LMAC's responsibilities include the following:

- a. Tasking, coordinating, and licensing all humanitarian demining activities, including surveying mine and EO contaminated land; mapping, marking, and clearing lands; and releasing cleared land.
- b. Setting MRE priorities and managing and coordinating MRE activities through the MRE Steering Committee.
- c. Managing and coordinating MVA activities through the MVA Steering Committee.
- d. Managing information flow and access through ensuring efficient management of the Information Management System for Mine Action (IMSMA).
- e. Accrediting all mine action organizations in accordance with the NMAS.
- f. Conducting Quality Assurance (QA) and Quality Control (QC) oversight of mine action activities.
- g. Reporting performance and implementation progress to the Ministry of Defense (MoD) semi-annually.
- h. Revising and updating the NMAS as required.
- i. Preparing and updating national accreditation and certification standards.
- j. Establishing and supervising regional mine action centers as necessary.

- k. Communicating with, cooperating, and asking for support and information from relevant agencies involved in mine action, including government agencies and international and national organizations, in accordance with the Lebanese Armed Forces (LAF) regulations.

The LMAC shall also prepare Memoranda of Understanding with Implementing Agencies as needed and shall, when appropriate, provide training on HMA to these IAs.

7. Role of Implementing Agencies

Implementing Agencies (IAs) shall, with the approval of the LMAC, secure their own funds to implement mine action projects in Lebanon. All IAs working in Humanitarian Mine Action in Lebanon shall work in accordance with the NMAS. Such work shall be monitored by the LMAC to ensure the safety, efficiency and effectiveness of operations. The LMAC shall be responsible for setting priorities, monitoring, evaluating, coordinating, accrediting, and licensing operations.


In addition to national and international Implementing Agencies, the LAF units shall be authorized to conduct HMA operations under LMAC's direction.

8. Funding Mine Action in Lebanon

The LMAC is authorized to seek funds for the implementation of the LMAP towards achieving the strategy set. Resource mobilization for the implementation of mine action is based on transparency, accountability, cost-effectiveness, and timeliness. Funding resources may come from government financing, grants, loans, the establishment of a National Mine Action Trust Fund, or through the LMAC Civil Section.

As part of the LAF, the LMAC may accept in-kind contributions such as the provision of subject specialists, equipment, material, training, and workshop participation opportunities to assist in operating mine action activities in Lebanon as long as such support promotes the LMAP strategy, does not impose undue restrictions, and is approved by the Director of LMAC on behalf of the MoD of the GoL.

Donors to all HMA related projects in Lebanon should not provide funds unless the applicants have prior LMAC approval for the program/project for which they are seeking support. Donors should ensure that the projects they support are appropriately QA/QC monitored to ensure compliance with the NMAS and the LMAP and provide continuous assessment of progress. To make national oversight, management and monitoring sustainable and efficient, the LMAC suggests that donors consider including a contribution to the work of the LMAC in the funding of HMA related activities that they support.

	LEBANON NATIONAL MINE ACTION STANDARDS		Edition 2.1	NMAS 02.10
	ANNEX A: Normative and Informative References			
				March 2020

The documents listed below constitute normative references and form an integral part of the provisions of this standard:

- Current LMAC and IMSMA reporting formats (request copies from the LMAC);
- NMAS 07.30 Guide for the Accreditation of Mine Action Organizations and Operations;
- NMAS 07.11 Guide for Land release;
- NMAS 12.10 Mine/ ERW Risk Education (Explosive Hazards Risk Education – EHRE);
- NMAS 13.10 Mine Victim Assistance; and
- NMAS 04.10 Glossary of Mine Action Terms, Definitions, & Abbreviations used in the Second Edition of the NMAS.

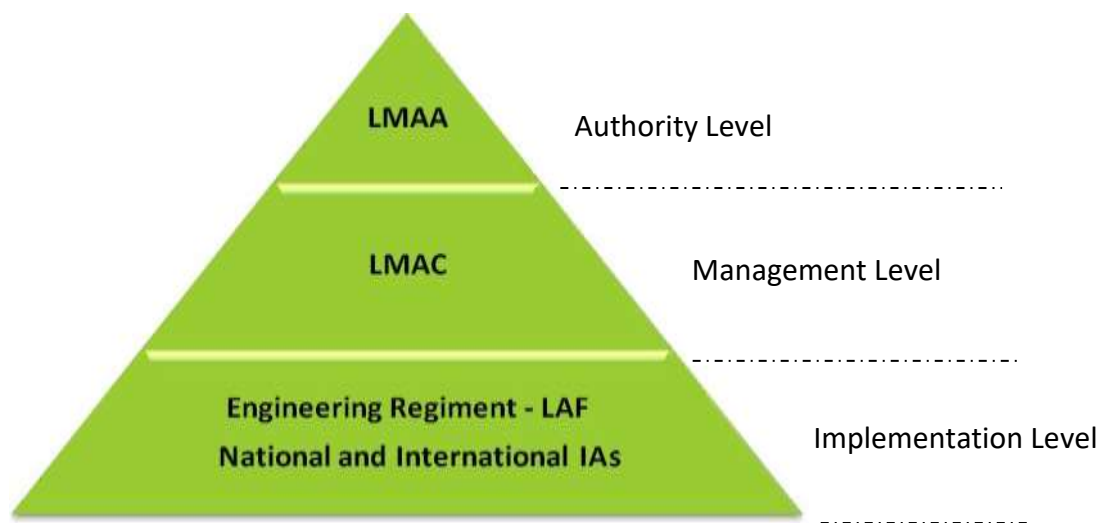
In addition to the normative references listed above, the following informative references may be consulted:

- National Mine Action Policy 2007;
- Lebanon National Mine Action Strategy 2020-2025; and
- IMAS 02.10 Guide for the Establishment of a Mine Action Programme.




ANNEX B: Hierarchy of the LMAP

March 2020



- LMAA Lebanon Mine Action Authority
- LMAC Lebanon Mine Action Center
- LAF Lebanese Armed Forces
National and International Implementing Agencies

	LEBANON NATIONAL MINE ACTION STANDARDS		Edition 2.1	NMAS 02.10
	ANNEX C: General organization of the LMAC			
				March 2020

SECTION	Responsibilities
Operations	Operations Section, managing all survey and demining activities, including prioritization, tasking and Land Release
QA/QC	Quality Assurance and Quality Control Section, overseeing the work of all IAs
VA	Victim Assistance Section (supporting civilian Victims of explosive hazards)
Media and MRE	Media, Website and Mine Risk Education Section (Explosive Hazards Risk Education –EHRE)
IT	Information Technology and Information Management Section, managing IMSMA data input and output, as well as IMSMA revision and backup.
Admin, Finance and Logistics	Managing all LAF Administration, Finance and Logistics requirement and the internal systems of the LMAC
ARCP	Arab Regional Cooperation Programme, promoting information and skills exchange on issues related to HMA across the region
RSHDL	Regional School for Humanitarian Demining in Lebanon providing training for national and international trainees
RMAC(s)	Regional Mine Action Centers

NMAS 02.10, Edition 2.1: Amendment Record

The NMAS are subject to a comprehensive or partial review by the Review Board periodically. Changes in the context as well as safety requirements and efficiency considerations may necessitate amendments to individual NMAS standards more frequently. If this occurs, such amendments shall be given a number, dated, and detailed in the table below. The amendment should also be indicated on the header under the NMAS edition number.

Whenever the formal review of the NMAS is completed, a new edition shall be issued. Amendments that have taken place before the review date shall be incorporated in the new edition and the amendment record table cleared. Consequently, the recording of amendments shall start again until the next review.

The most recent revisions of the NMAS shall be posted on the Lebanon Mine Action Center (LMAC) website on www.lebmac.org.

Number	Date	Amendment Details
1	March 2020	Minor revisions throughout